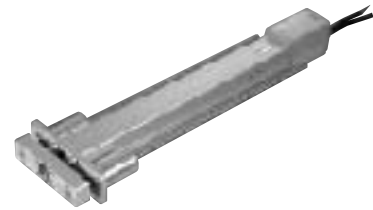


# RCP2-RMGD

ROBO Cylinder Rod Type: Unit Width 64mm, Pulse Motor, w/ Double Guide



Type Rod (64mm wide), w/Double Guide Stroke 50~300mm Load capacity 5kg (horizontal)/24kg (vertical)

Model Specification Items Series Type Encoder type Motor Lead Stroke Applicable controller Cable length Options  
 (Example) RCP2 -RMGD- I - PM - 8 - 300 - P1 - S - FT

\* Refer to page 37 for the details of the model specification items.

## Model/Specifications

\* The maximum speed limit of the RCP2 Series will vary according to the weight of the load on the slider (rod). Refer to Correlation Diagrams of Speed and Load Capacity on page 32.

Model	Encoder type	Motor	Lead (mm)	Stroke 50mm increments (mm)	Speed (Note 2) (mm/s)	Load capacity (Note 2)		Maximum push force (N)
						Horizontal (kg)	Vertical (kg)	
RCP2-RMGD-O-PM-16-***-P1-△-□	Absolute Incremental	Pulse motor	16	50 ~ 300	10 ~ 450 <400>	4 ~ 1	4 ~ 0.5	240
RCP2-RMGD-O-PM-8-***-P1-△-□			8		5 ~ 210	5 ~ 1.5	16 ~ 1	470
RCP2-RMGD-O-PM-4-***-P1-△-□			4		1 ~ 133	5 ~ 2	24 ~ 0.5	800

\* In the above model names, O indicates the encoder type, \*\*\* the stroke, △ the cable length, and □ the applicable options.

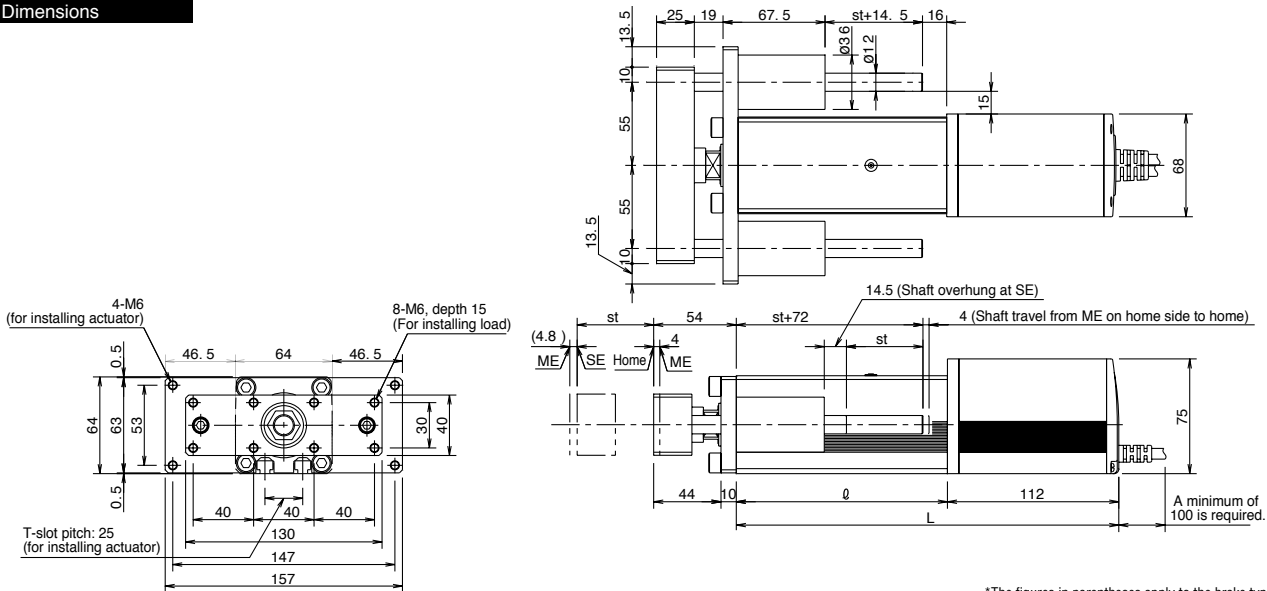
## Options

Name	Model	Page
Brake	B	→P137
With foot bracket	FT	→P139

## Common Specifications

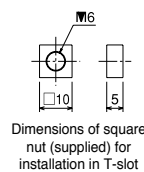
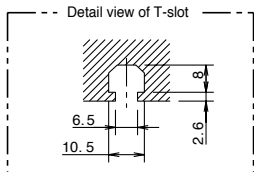
Drive system	Ball screw $\phi$ 12mm, rolled C10
Positioning repeatability	$\pm$ 0.02mm
Backlash	0.05mm or less
Guide	Double guide (guide rod diameter $\phi$ 10mm, ball bush type)
Rod diameter	$\phi$ 30mm
Rod non-rotative accuracy	$\pm$ 0.05°
Base	Material: Aluminum with white alumite treatment
Cable length (Note 3)	N: No cable, P: 1m, S: 3m, M: 5m, X □ □: Length specification, R □ □: Robot cable

## Dimensions



■ Dimensions, Weight and Maximum Speed by Stroke \*The figures in parentheses apply to the brake type, while those in < > apply to a vertical application.

Stroke	50	100	150	200	250	300
ℓ	138	188	238	288	338	388
L	250 (322.5)	300 (372.5)	350 (422.5)	400 (472.5)	450 (522.5)	500 (572.5)
Weight (kg)	4.4	5.0	5.5	6.1	6.7	7.3
Maximum speed (mm/s)	Lead 16	450 <400>				
	Lead 8	210				
	Lead 4	133				



## Applicable Controller Specifications

Applicable Controller	Maximum number of controlled axes	Compatible encoder type	Program operation	Positioner operation	Pulse-train control	Power-supply voltage	Page
RCP2-C	1 axis	Absolute	X	O	X	24VDC	→P151
RCP2-CG	1 axis	Incremental	X	O	X		→P151



(Note 1) The figures in ( ) apply to a vertical application.  
 (Note 2) The load capacity is based on operation at an acceleration of 0.2 G. The horizontal load capacity applies when the actuator is operated only by its guide. For the relationship of load capacity and life, refer to the diagrams of allowable tip load and traveling life on page 133.  
 (Note 3) The maximum cable length is 15 m for the absolute type and 20 m for the incremental type. Specify the desired length in meters (e.g., X08 = 8 m).

\* Refer to page 23 for other points to note.