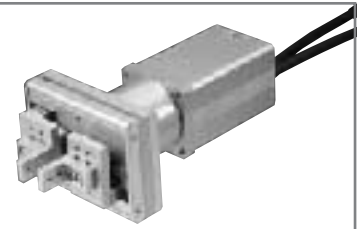


# RCS-G20

ROBO Gripper, 60W, w/ Reduction Gear, High-Load Type



Type	Gripper (high load)	Stroke	20~200mm	Maximum gripping force	45.1N
------	---------------------	--------	----------	------------------------	-------

Model specification items — Series — Type — Encoder type — Motor — Reduction rate — Stroke — Cable length  
 (Example) RCS -G20 - I - 60 - 5 - 20 - S

\* Refer to page 37 for the details of model specification items.

## Model/Specifications

Model	Encoder type	Motor (W)	Gear ratio	Stroke (mm) (Note 1)	Maximum number of reciprocation (cpm)	Maximum gripping force(N) (Note 2)
RCS-G20-I-60-5-***-△-□	Incremental	60	5 : 1	20,40,(60),(80),100,(120),(200)	60	45.1

\* In the above model names, \*\*\* indicates the stroke and △ the cable length.

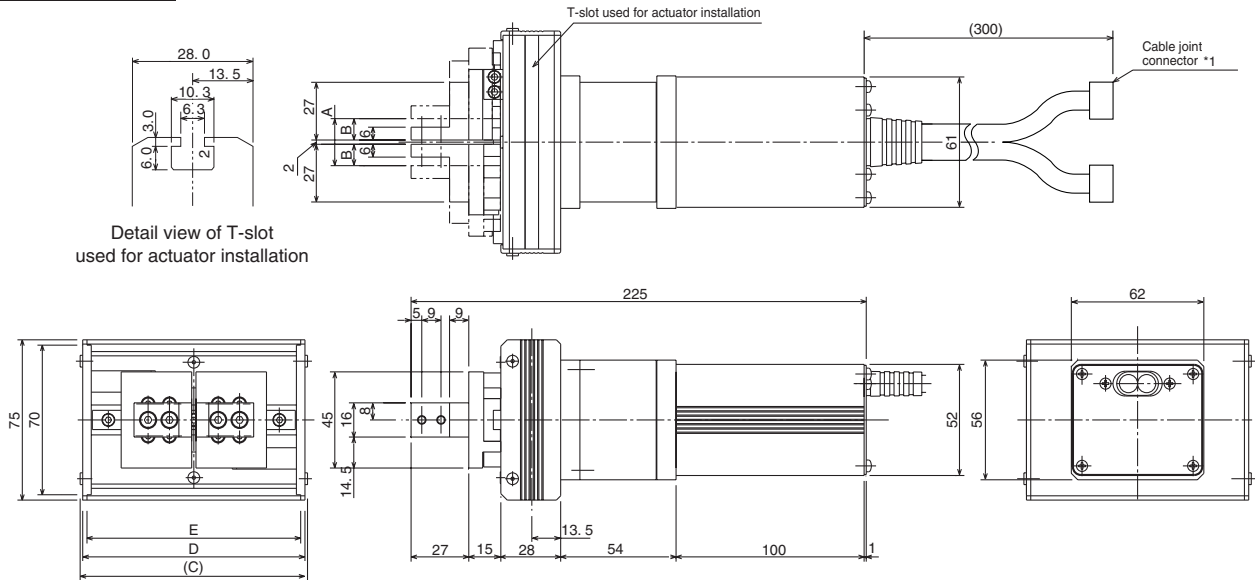
## Options

Name	Model	Page
*No options are available for this model.		

## Common Specifications

Drive system	Rack & pinion
Positioning repeatability	±0.04mm
Backlash	0.7mm or less
Guide	Linear guide
Allowable static moment	Ma: 5.1N • m Mb: 5.1N • m Mc: 10.4N • m
Reduction gear	Planetary gear
Actuator	Special aluminum extruded material with white alumite treatment
Cable length (Note 3)	P: 1m, S: 3m, M: 5m, X□□: Length specification, R□□: Robot cable

## Dimensions



\*1 Connect the motor cable and encoder cable. Refer to page 171 for details on these cables. 14. Open/close stroke

### Dimensions and Weight by Stroke

Open/close stroke	20	40	(60)	(80)	100	(120)	(200)
A	22	42	62	82	102	122	202
B	10	20	30	40	50	60	100
C	106.4	126.4	146.4	166.4	186.4	206.4	286.4
D	104	124	144	164	184	204	284
E	100	120	140	160	180	200	280
Weight (kg)	1.8	1.9	1.9	2.0	2.0	2.1	2.3

\*1 The strokes in parentheses are semi-standard settings. If you select any these stroke settings, the delivery time will become longer.

## Applicable Controller Specifications

Applicable Controller	Maximum number of controlled axes	Compatible encoder type	Program operation	Positioner operation	Pulse-train control	Power supply voltage	Page
RCS-C	1 axis	Incremental	X	O	X	AC100/200V	→P163

**Caution**

(Note 1) The strokes in parentheses (60, 80, 120 and 200) are semi-standard specifications. If you select any these stroke settings, the delivery time will become longer than the standard models. Please check the delivery time before ordering.

(Note 2) The specified value is the sum of maximum gripping forces of both fingers.

(Note 3) The maximum cable length is 15 m. Specify the desired length in meters (e.g., X08 = 8 m).

\* Refer to page 23 for other points to note.