

# RCS-R20

ROBO Rotary, 60W, Motor-Reversed Type



Type	Rotary	Oscillation angle	300°	Rated torque	2.4N·m
------	--------	-------------------	------	--------------	--------

Model specification items — Series — Type — Encoder type — Motor — Reduction rate — Stroke — Cable length — Options  
 (Example) RCS -R20 - I - 60 - 18 - 300 - S - L

\* Refer to page 37 for the details of model specification items.

## Model/Specifications

Model	Encoder type	Motor (W)	Gear ratio	Oscillation angle (°)	Maximum speed (°/sec)	Rated torque (Note 1) (N·m)	Load inertia (kg·m <sup>2</sup> )
RCS-R20-I-60-18-300-△-L	Incremental	60	18:1	300	500	2.4	2.5X10 <sup>-2</sup> or less

\*In the above model name, △ indicates the cable length.

## Options

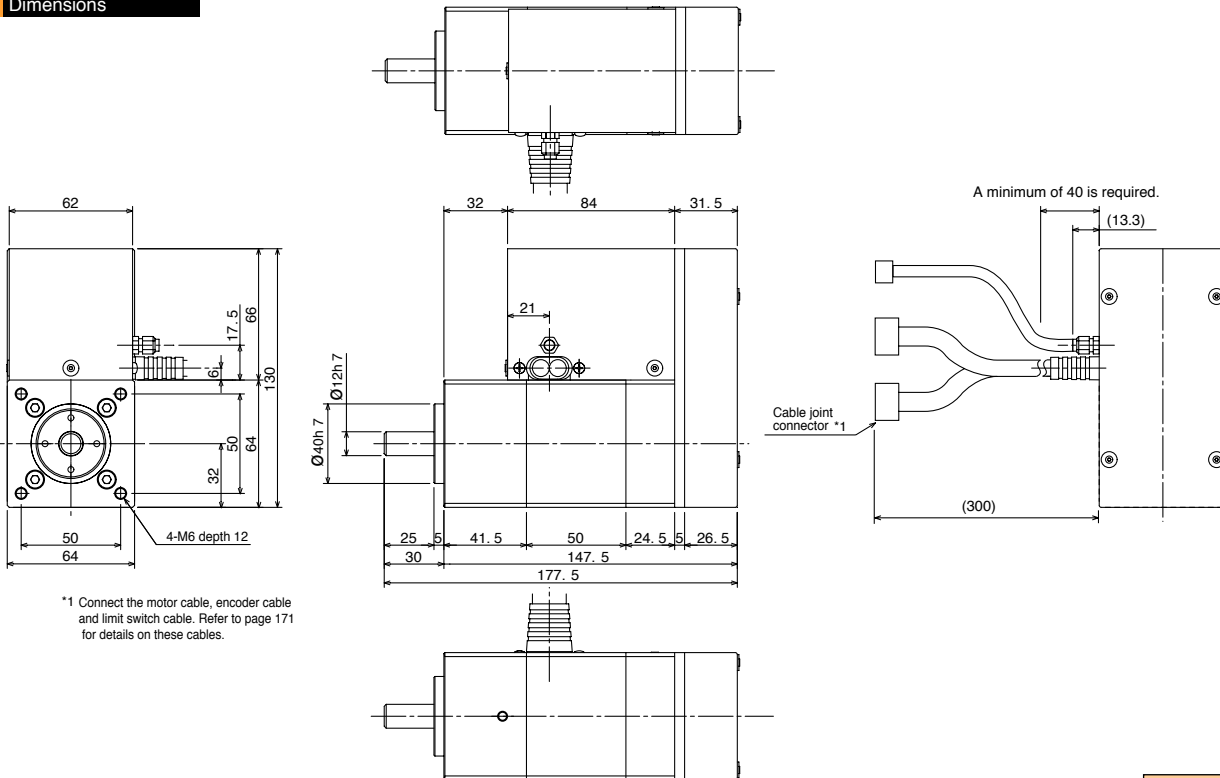
Name	Model	Page
Home limit switch	L	-

\*Normally the home limit switch is provided as an option. With the rotary type, however, this switch is set as a standard accessory.

## Common Specifications

Drive system	Ball reduction gear (Motor is connected via a timing belt)
Positioning repeatability	±0.02mm
Backlash	0.1° or less
Allowable load moment	6.8N·m or less
Thrust load (Note 3)	100N or less
Actuator	Special aluminum material with white alumite treatment
Cable length (Note 3)	P: 1m, S: 3m, M: 5m, X□□: Length specification, R□□: Robot cable
Actuator weight	2.8kg

## Dimensions



Weight (kg) 2.8

## Applicable Controller Specifications

Applicable Controller	Maximum number of controlled axes	Compatible encoder type	Program operation	Positioner operation	Pulse-train control	Power supply voltage	Page
E-Con	1 axis	Incremental	X	O	X	AC100/200V	*

\*Refer to the separate catalog.

**Caution**

(Note 1) Allowable value during movement.  
 (Note 2) When positioning is performed in one direction by ignoring backlash.  
 (Note 3) Thrust load\* refers to a mechanical strength of the output shaft in a stationary state. Select an appropriate model by considering the thrust load with respect to load moment and load inertia.  
 (Note 4) The maximum cable length is 15 m. Specify the desired length in meters (e.g., X08 = 8 m).

\* Refer to page 23 for other points to note.

ERC Actuators  
 RCP2 Actuators  
 RCS Actuators  
 Information on Guide Types  
 Actuator Options  
 How to Install Actuator  
 ERC Controllers  
 RCP2 Controllers  
 RCS Controllers