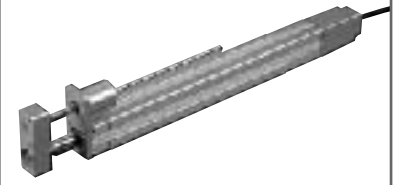


RCS-RA35-GS

ROBO Cylinder Rod Type: Unit Width 35mm, 20W, Slim Shape w/ Single Guide



Type Rod (35mm wide) w/ single guide Stroke 50~150mm Load capacity 18kg (horizontal)/6.2kg (vertical)

Model specification items Series Type Encoder type Motor Guide type Speed type Stroke Cable length Options
 (Example) RCS - RA35- I - 20 - GS1 - H - 150 - S - FT

* Refer to page 37 for the details of model specification items.

Model/Specifications

Model	Encoder type	Motor (W)	Lead (mm)	Stroke 50mm increments (mm)	Speed (mm/s)	Load capacity (Note 1)		Rated thrust (N)
						Horizontal (kg)	Vertical (kg)	
RCS-RA35-I-20-GS@-H-***-△-□	Incremental	20	10	50~150	1~500	4	0.7	34.3
RCS-RA35-I-20-GS@-M-***-△-□			5		1~250	9	2.7	67.7
RCS-RA35-I-20-GS@-L-***-△-□			2.5		1~125	18	6.2	136.4

* In the above model names, @ indicates the guide installation direction, *** the stroke, △ the cable length, and □ the applicable options.

Options

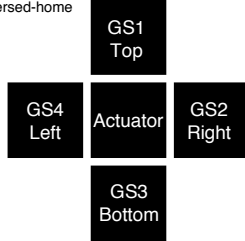
Name	Model	Page
With foot bracket	FT	→P139

Common Specifications

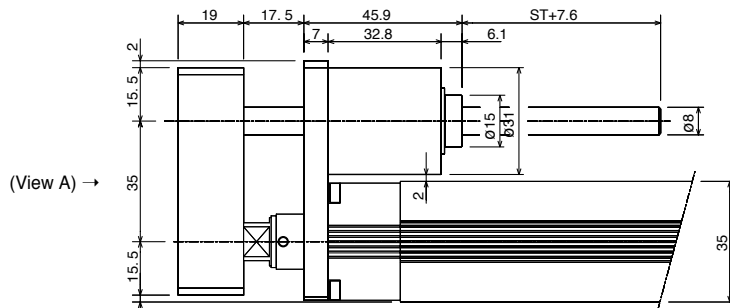
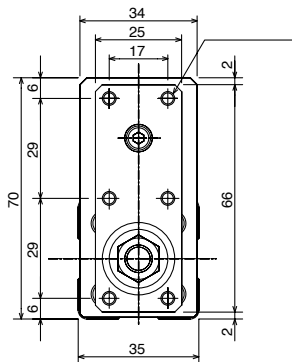
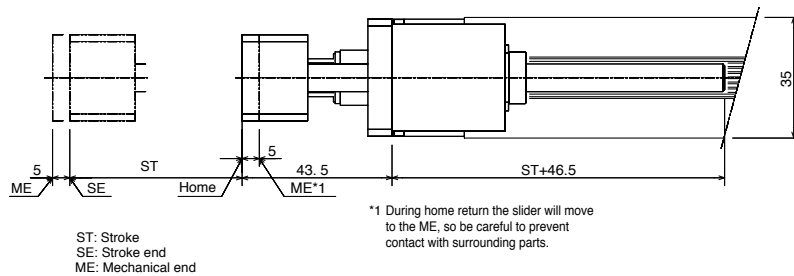
Drive system	Ball screw Ø8mm, rolled C10
Positioning repeatability	±0.02mm
Backlash	0.05mm or less
Guide	Ball bush guide x 1 (externally attached)
Rod diameter	Ø16mm
Rod non-rotational accuracy	±0.1°
Base	Material: Aluminum with white alumite treatment
Cable length (Note 2)	P: 1m, S: 3m, M: 5m, X□□: Length specification, R□□: Robot cable

Dimensions

* Please note that due to its structure, the rod type is not available in the reversed-home specification.



Guide installation direction (View A)



Weight by Stroke

Stroke	50	100	150
Weight (kg)	1.1	1.3	1.4

Applicable Controller Specifications

Applicable Controller	Maximum number of controlled axes	Compatible encoder type	Program operation	Positioner operation	Pulse-train control	Power supply voltage	Page
RCS-C	1 axis	Incremental	X	O	X	24VDC	→P163
RCS-E	1 axis		X	O	X	24VDC	→P163



(Note 1) The load capacity is based on operation at an acceleration of 0.3 G (or 0.2 G for the L type). The horizontal load capacity assumes a condition where a guide or guides are used to prevent the rod from receiving radial loads. If no guide is used, refer to the correlation diagrams of allowable tip load and traveling life on page 132.
 (Note 2) The maximum cable length is 15 m. Specify the desired length in meters (e.g., X08 = 8 m).

* Refer to page 23 for other points to note.