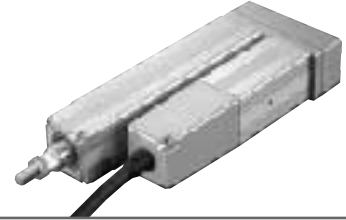


# RCS-RA35R

ROBO Cylinder Rod Type: Unit Width 35mm, 20W, Slim Motor-Reversed Shape



Type Rod (35mm wide) w/ motor-reversing Stroke 50~150mm Load capacity 18kg (horizontal)/6.5kg (vertical)

Model specification items Series Type Encoder type Motor Guide type Speed type Stroke Cable length Options  
 (Example) RCS -RA35R- I - 20 - GN - H - 150 - S - FT

\* Refer to page 37 for the details of model specification items.

## Model/Specifications

Model (Note 1)	Encoder type	Motor (W)	Lead (mm)	Stroke 50mm increments (mm)	Speed (mm/s)	Load capacity (Note 2)		Rated thrust (N)
						Horizontal (kg)	Vertical (kg)	
RCS-RA35-I-20-GS@-H-***-△-□	Incremental	20	10	50~150	1~500	4	1	34.3
RCS-RA35-I-20-GS@-M-***-△-□			5		1~250	9	3	67.7
RCS-RA35-I-20-GS@-L-***-△-□			2.5		1~120	18	6.5	136.4

\* In the above model names, @ indicates the guide installation direction, \*\*\* the stroke, △ the cable length, and □ the applicable options.

## Options

Name	Model	Page
With flange	FL	→P138
With foot bracket	FT	→P139
Inverse motor-reversing direction	R	→P137

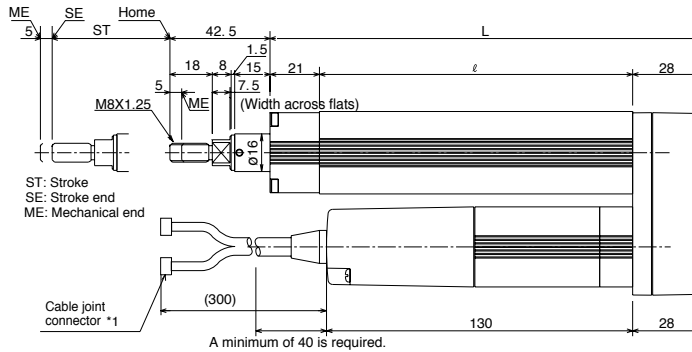
## Common Specifications

Drive system	Ball screw ø8mm, rolled C10 (The ball screw is driven by a timing belt. No reduction gear is provided.)
Positioning repeatability	±0.02mm
Backlash	0.05mm or less
Guide	GN: No guide, GS1 to 4: Single guide, GD: Double guides
Rod diameter	ø16mm
Rod non-rotational accuracy	GN: ±0.7° GS: ±0.1° GD: ±0.08°
Base	Material: Aluminum with white alumite treatment
Cable length (Note 2)	P: 1m, S: 3m, M: 5m, X□□: Length specification, R□□: Robot cable

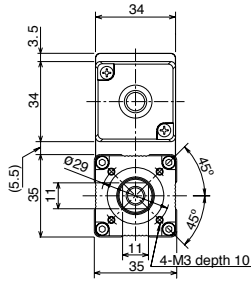
## Dimensions

\* Please note that due to its structure, the rod type is not available in the reversed-home specification.

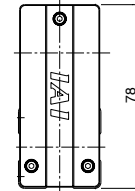
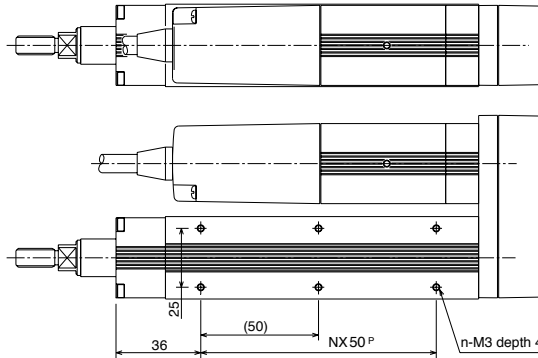
\* If you are using a guide type, select an appropriate installation direction by paying careful attention to possible contact between the guide and motor.



\*1 Connect the motor/encoder cables. Refer to page 171 for details on the cables.



E-M8 depth 10 (from back side)



## Dimensions and Weight by Stroke

Stroke	50	100	150
ℓ	133	183	233
L	182	232	282
N	2	3	4
n	6	8	10
Weight (kg)	1.0	1.2	1.4

## Applicable Controller Specifications

Applicable Controller	Maximum number of controlled axes	Compatible encoder type	Program operation	Positioner operation	Pulse-train control	Power supply voltage	Page
RCS-C	1 axis	Incremental	X	O	X	24VDC	→P163
RCS-E	1 axis		X	O	X	24VDC	→P163



(Note 1) Select GN (no guide), GS1 to 4 (single guide) or GD (double guides) as the type of guide.  
 (Note 2) The load capacity is based on operation at an acceleration of 0.3 G (or 0.2 G for the L type). The horizontal load capacity assumes a condition where a guide or guides are used to prevent the rod from receiving radial loads.  
 (Note 3) The maximum cable length is 15 m. Specify the desired length in meters (e.g., X08 = 8 m).

\* Refer to page 23 for other points to note.