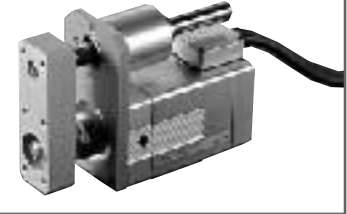


RCS-RB7525-GS

ROBO Cylinder Rod Type: Unit Width 75mm, 60W, Short Shape w/ Single Guide



Type	Rod (75mm wide) w/ single guide	Stroke	50~300mm	Load capacity	45kg (horizontal)/6kg (vertical)
------	---------------------------------	--------	----------	---------------	----------------------------------

Model specification items — Series — Type — Encoder type — Motor — Guide type — Speed type — Stroke — Cable length — Options
 (Example) RCS - RB7525 - I - 60 - GS1 - H - 300 - S - B

* Refer to page 37 for the details of model specification items.

Model/Specifications

Model	Encoder type	Motor (W)	Lead (mm)	Stroke 50mm increments (mm)	Speed (mm/s) (Note 1)	Load capacity (Note 2)		Rated thrust (N)
						Horizontal (kg)	Vertical (kg)	
RCS-RB7525-I-60-GS①-H-***-△-□	Incremental	60	10	50~300	1~500	25	3	101.9
RCS-RB7525-I-60-GS①-M-***-△-□			5		1~250	45	6	203.8

* In the above model names, ① indicates the guide installation direction, *** the stroke, △ the cable length, and □ the applicable options.

Options

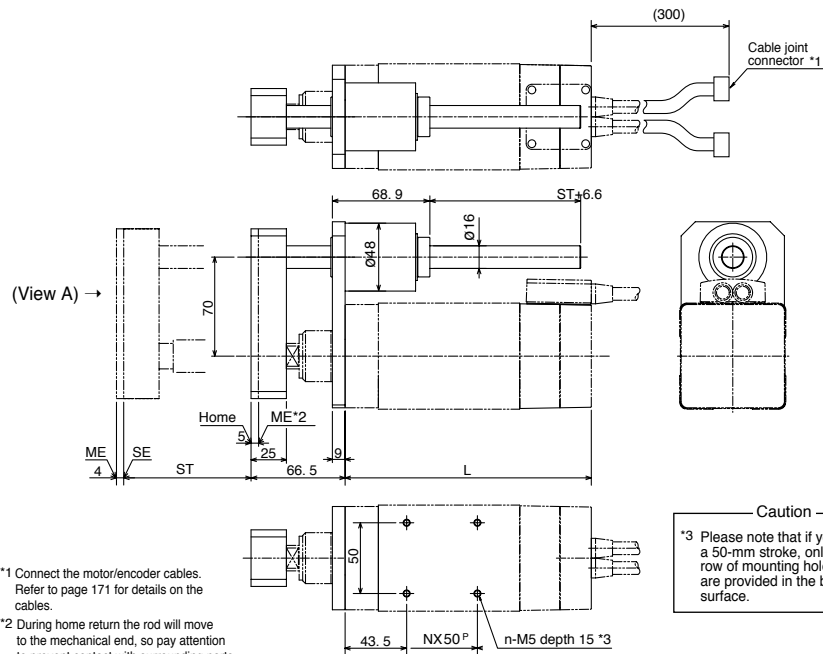
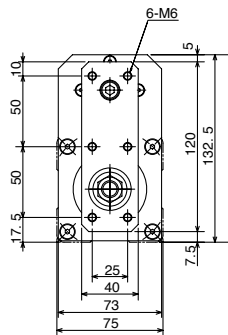
Name	Model	Page
Different connector-cable outlet direction	A1~A3	→P137
Brake	B	→P137
With foot bracket	FT	→P139

Common Specifications

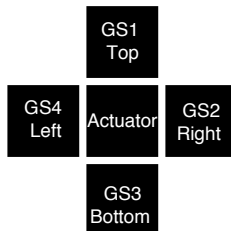
Drive system	Ball screw \varnothing 8mm, rolled C10
Positioning repeatability	\pm 0.02mm
Backlash	0.05mm or less
Guide	Ball bush guide x 1 (externally attached)
Rod diameter	\varnothing 25mm
Rod non-rotational accuracy	\pm 0.1°
Base	Material: Aluminum with white alumite treatment
Cable length (Note 3)	P: 1m, S: 3m, M: 5m, X□□: Length specification, R□□: Robot cable

Dimensions

* Please note that due to its structure, the rod type is not available in the reversed-home specification.



Caution
 *3 Please note that if you choose a 50-mm stroke, only a single row of mounting holes (2 holes) are provided in the bottom surface.



Guide installation direction (View A)

*1 Connect the motor/encoder cables. Refer to page 171 for details on the cables.
 *2 During home return the rod will move to the mechanical end, so pay attention to prevent contact with surrounding parts.
 ST: Stroke
 SE: Stroke end
 ME: Mechanical end

Dimensions, Weight and Maximum Speed by Stroke

Stroke	50	100	150	200	250	300
L	124	174	224	274	324	374
N	-	1	2	3	4	5
n	2	4	6	8	10	12
Weight (kg)	3.0	3.6	4.1	4.6	5.1	5.7
Maximum speed (mm/s)	H type				485	350
	M type				245	175

Applicable Controller Specifications

Applicable Controller	Maximum number of controlled axes	Compatible encoder type	Program operation	Positioner operation	Pulse-train control	Power supply voltage	Page
RCS-C	1 axis	Absolute/ Incremental	X	O	X	24VDC	→P163
RCS-E	1 axis		X	O	X	24VDC	→P163

Caution
 (Note 1) A longer stroke will result in a lower maximum speed to prevent the ball screw from reaching a dangerous speed. (Refer to the above table for the maximum speed at a given stroke.)
 (Note 2) The load capacity is based on operation at an acceleration of 0.1 G for the H type and 0.08 G for the M type (each represents the maximum acceleration for the applicable type). If no guide is used, refer to the correlation diagrams of allowable tip load and traveling life on page 132.
 (Note 3) The maximum cable length is 15 m. Specify the desired length in meters (e.g., X08 = 8 m).

* Refer to page 23 for other points to note.