

# RCS-RB7530-100-GS

ROBO Cylinder Rod Type: Unit Width 75mm  
100W, Short Shape w/ Single Guide



Type Rod (75mm wide) w/ single guide Stroke 50~300mm Load capacity 30kg (horizontal)/11.5kg (vertical)

Model specification items Series Type Encoder type Motor Guide type Speed type Stroke Cable length Options  
(Example) RCS -RB7530- I - 100- GS1 - H - 300 - S - B

\* Refer to page 37 for the details of model specification items.

## Model/Specifications

Model	Encoder type	Motor (W)	Lead (mm)	Stroke 50mm increments (mm)	Speed (mm/s) (Note 1)	Load capacity (Note 2)		Rated thrust (N)
						Horizontal (kg)	Vertical (kg)	
RCS-RB7530-I-100-GS <sup>⊙</sup> -H-***-△-□	Incremental	100	12	50~300	1~600	15	4.5	141.1
RCS-RB7530-I-100-GS <sup>⊙</sup> -M-***-△-□			6		1~300	30	11.5	283.2

\* In the above model names, <sup>⊙</sup> indicates the guide installation direction, \*\*\* the stroke, △ the cable length, and □ the applicable options.

## Options

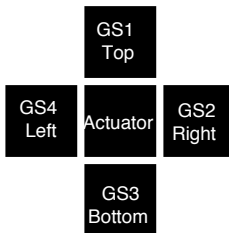
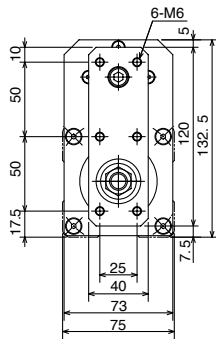
Name	Model	Page
Different connector-cable outlet direction	A1~A3	→P137
Brake	B	→P137
With foot bracket	FT	→P139

## Common Specifications

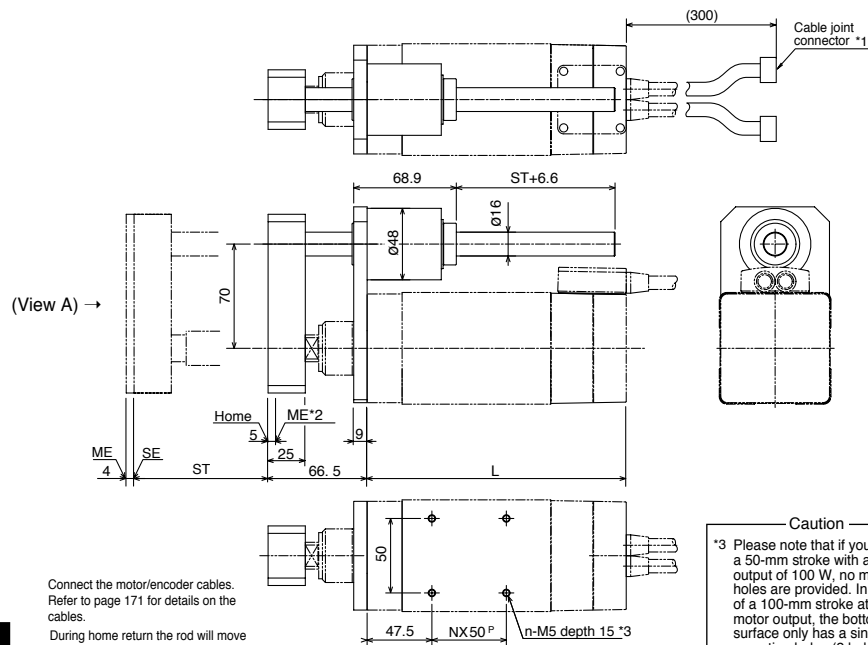
Drive system	Ball screw $\varnothing$ 10mm, rolled C10
Positioning repeatability	$\pm$ 0.02mm
Backlash	0.05mm or less
Guide	Ball bush guide x 1 (externally attached)
Rod diameter	$\varnothing$ 30mm
Rod non-rotational accuracy	$\pm$ 0.1°
Base	Material: Aluminum with white alumite treatment
Cable length (Note 3)	P: 1m, S: 3m, M: 5m, X□□: Length specification, R□□: Robot cable

## Dimensions

\* Please note that due to its structure, the rod type is not available in the reversed-home specification.



Guide installation direction (View A)



Connect the motor/encoder cables. Refer to page 171 for details on the cables.  
During home return the rod will move to the mechanical end, so pay attention to prevent contact with surrounding parts.

ST: Stroke  
SE: Stroke end  
ME: Mechanical end

**Caution**  
\*3 Please note that if you choose a 50-mm stroke with a motor output of 100 W, no mounting holes are provided. In the case of a 100-mm stroke at the same motor output, the bottom surface only has a single row of mounting holes (2 holes)

## Dimensions, Weight and Maximum Speed by Stroke

Stroke	50	100	150	200	250	300
L	128	178	228	278	328	378
N	-	-	1	2	3	4
n	-	2	4	6	8	10
Weight (kg)	3.3	3.9	4.4	4.9	5.4	6.0
Maximum speed (mm/s)	H type					505
	M type					250

## Applicable Controller Specifications

Applicable Controller	Maximum number of controlled axes	Compatible encoder type	Program operation	Positioner operation	Pulse-train control	Power supply voltage	Page
RCS-C	1 axis	Incremental	X	O	X	AC100/200V	→P163
E-Con	1 axis	Incremental	X	O	X	AC100/200V	Refer to the separate catalog.
P-Driver	1 axis	Incremental	X	X	O	AC100/200V	
X-SEL	4 axes	Incremental	O	△	X	AC100/200V	

**Caution**  
(Note 1) A longer stroke will result in a lower maximum speed to prevent the ball screw from reaching a dangerous speed. (Refer to the above table for the maximum speed at a given stroke.)  
(Note 2) The load capacity is based on operation at an acceleration of 0.2G for the H type and 0.1 G for the M type (each represents the maximum acceleration for the applicable type). If no guide is used, refer to the correlation diagrams of allowable tip load and traveling life on page 132.  
(Note 3) The maximum cable length is 15 m. Specify the desired length in meters (e.g., X08 = 8 m).

\* Refer to page 23 for other points to note.