

IX-HNN6020

IX Medium SCARA Robot Ceiling-Mount Type:
Arm Length 600mm, Vertical (Z) Axis 200mm

IX-INN6020

IX Medium SCARA Robot Inverse Type:
Arm Length 600mm, Vertical (Z) Axis 200mm

Type Ceiling-mount type Arm length 600mm Load capacity 2kg rated/10kg maximum

Model items Series Model Cable length Controller type Standard I/O Expansion I/O I/O cable length Power-supply voltage
(Example) IX-HNN6020-5L-KX-N1-EEE-2-2

* Refer to P.10 for details on the model items.

* The above model code represents a combination of robot and controller.



Model/Specifications

| Model | Axis configuration | | Arm length (mm) | Motor capacity (W) | Work envelope | Positioning repeatability (mm) (Note 1) | Maximum operating speed (Note 2) | Standard cycle time (sec) (Note 3) | Load capacity (kg) | | Axis 3 push force (N) | | Axis 4 allowable load | |
|-------------------------|--------------------|---------------|-----------------|--------------------|---------------|---|----------------------------------|------------------------------------|--------------------|---------|-----------------------|-------------------------|---|------------------------|
| | Axis 1 | Axis 2 | | | | | | | Rated | Maximum | Push action (Note 4) | Maximum thrust (Note 4) | Allowable inertial moment (kg·m ²) (Note 5) | Allowable torque (N·m) |
| IX-HNN6020-5L-□-□-□-□-2 | Axis 1 | Arm 1 | 350 | 400 | ±120° | ±0.010 | 7121mm/s (Composite speed) | 0.52 | 2 | 10 | 108 | 152 | 0.06 | 3.3 |
| IX-INN6020-5L-□-□-□-□-2 | Axis 2 | Arm 2 | 250 | 200 | ±145° | | | | | | | | | |
| | Axis 3 | Vertical axis | — | 200 | 200mm | ±0.010 | 1393mm/s | | | | | | | |
| | Axis 4 | Rotating axis | — | 100 | ±360° | ±0.005 | 1200°/s | | | | | | | |

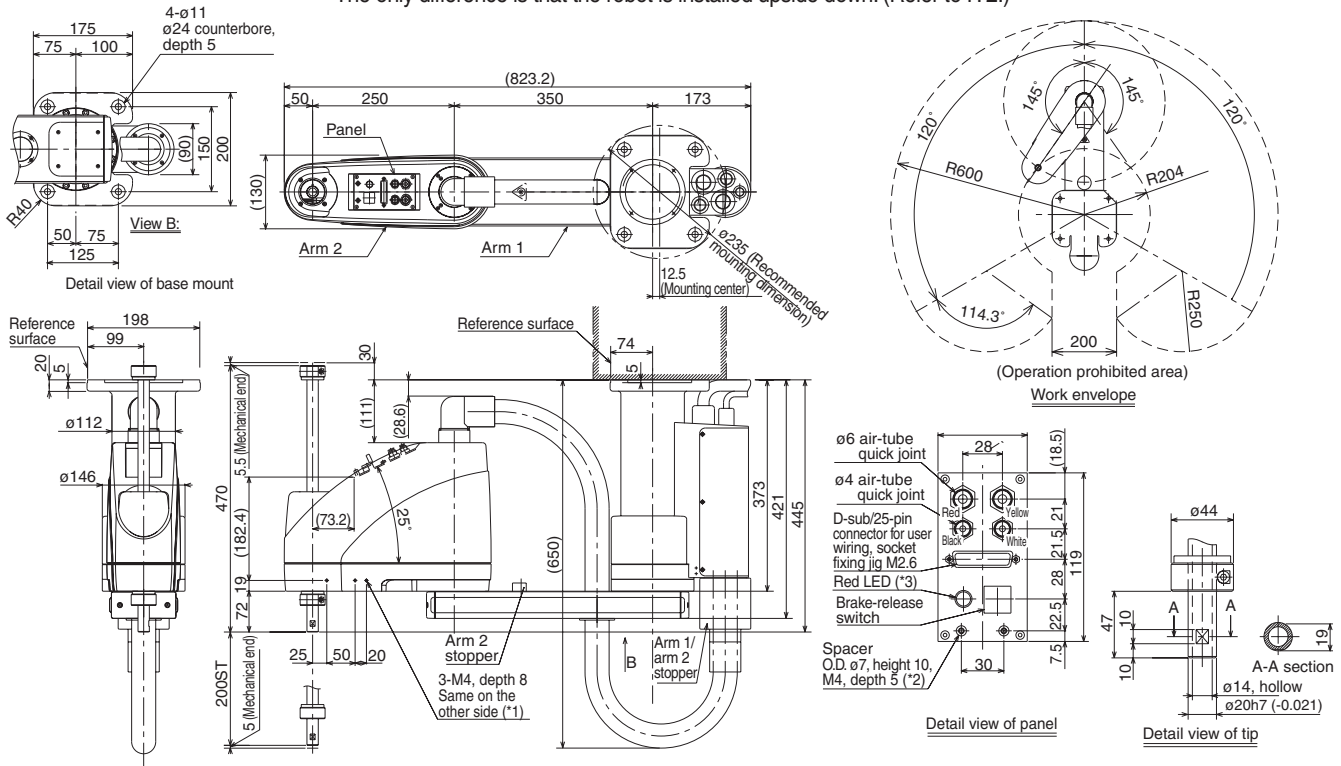
* In the above model code, specify the desired controller in □. For details, refer to "Explanation of SCARA Robot Model Items" (P.10).

Common Specifications

| | | | |
|-------------------------------|--|------------------------------|---|
| Encode type | Absolute | Ambient temperature/humidity | Temperature: 0-40°C, humidity: 20-85%RH or below (non-condensing) |
| User wiring | 25-conductor AWG26 D-sub/25-pin connector with shield (socket) | Robot weight | 31.5kg |
| User tubing | Air tube (O.D. ø6, I.D. ø4) x 2 (Normal working pressure 0.8MPa) Air tube (O.D. ø4, I.D. ø2.5) x 2 (Normal working pressure 0.8MPa) | Cable length (Note 8) | 5L: 5m (standard), 10L: 10m (optional) |
| Alarm indicator (Note 6) | Red, small LED indicator x 1 (24 VDC must be supplied.) | | |
| Brake-release switch (Note 7) | Brake-release switch to prevent the vertical axis from dropping (24 VDC must be supplied.) | | |

Dimensions

* The following illustrations also apply to the inverse type.
The only difference is that the robot is installed upside down. (Refer to P.2.)



*1: The prepared hole 3-M4, depth 8 passes through the side panel of the arm. A long mounting screw will contact the mechanical parts inside the arm, so exercise caution.

*2: The external force applied to each spacer must not exceed 30 N in the axial direction or 2 N·m in the rotating direction.

*3: To use the LED, the user must provide a circuit that takes signals from the controller's I/O output and supplies 24 VDC to the applicable LED terminal in the user connector.

- Cables/tubes
- Motor/encoder cable 5m/10m
 - Brake power cable 5m/10m
 - User cable 5m/10m
 - Air tube (4 pcs) 0.15m

Applicable Controller Specifications

| Applicable controller | Features | Maximum I/O points (inputs/outputs) | Serial communication unit | Power-supply voltage | Page |
|-----------------------|---|-------------------------------------|---------------------------|----------------------|------|
| XSEL-KX | General-purpose type offering excellent expandability | 176/160 points | Can be installed. | AC200V | P37 |



Refer to P.6 for the explanations of (Note 1) to (Note 8).